

# SF Bay Area Employment Report

*Alameda, Contra Costa, Marin, Napa, San Francisco, San Mateo,  
 Santa Clara, Solano, and Sonoma Counties*

March, 2017

## Growth in Total Nonfarm Payrolls: Nation, State, and Bay Area

Figure 1: Historical Growth

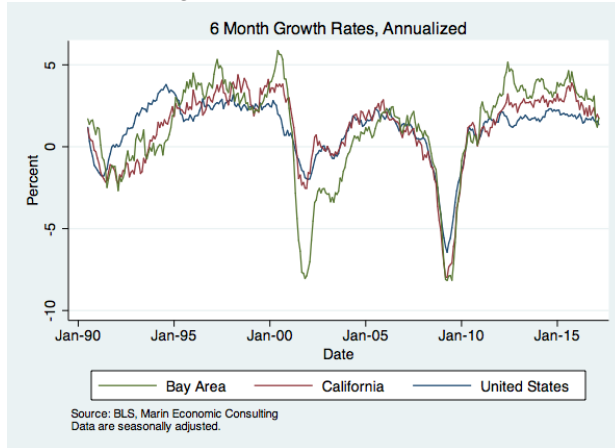
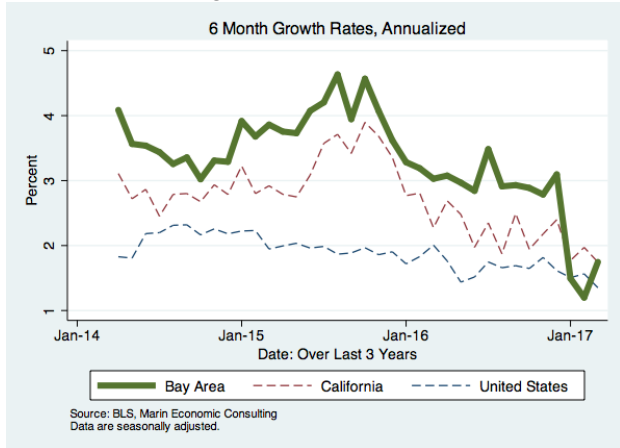


Figure 2: Last 3 Years



## Employment Growth by Region for March, 2017, Seasonally Adjusted

Industry	Employment	Empl Growth	% Growth - Annualized Rate					
			Monthly Month	Qtr	6mo	1yr	3yr	5yr
U.S.	145,858	98.0	0.8	1.5	1.4	1.5	1.9	1.8
California	16,694	19.3	1.4	1.4	1.7	2.1	2.7	2.8
Oakland MD	1,156	9.9	10.9	1.9	2.7	2.8	3.2	3.2
San Francisco MD	1,110	0.2	0.2	2.1	1.8	2.5	4.1	4.5
San Jose MSA	1,081	3.0	3.4	-1.8	1.2	2.0	3.0	3.7
Santa Rosa MSA	202	-1.5	-8.5	-3.5	-1.2	0.6	2.3	3.9
Vallejo MSA	138	0.4	3.6	0.3	1.2	1.9	3.0	2.9
San Rafael MD	117	0.5	5.5	3.3	3.0	3.0	1.9	2.3
Napa MSA	72	0.0	0.0	1.7	2.3	2.1	1.5	2.6
Bay Area	3,876	12.5	4.0	0.6	1.7	2.3	3.2	3.7

Source: BLS, Marin Economic Consulting

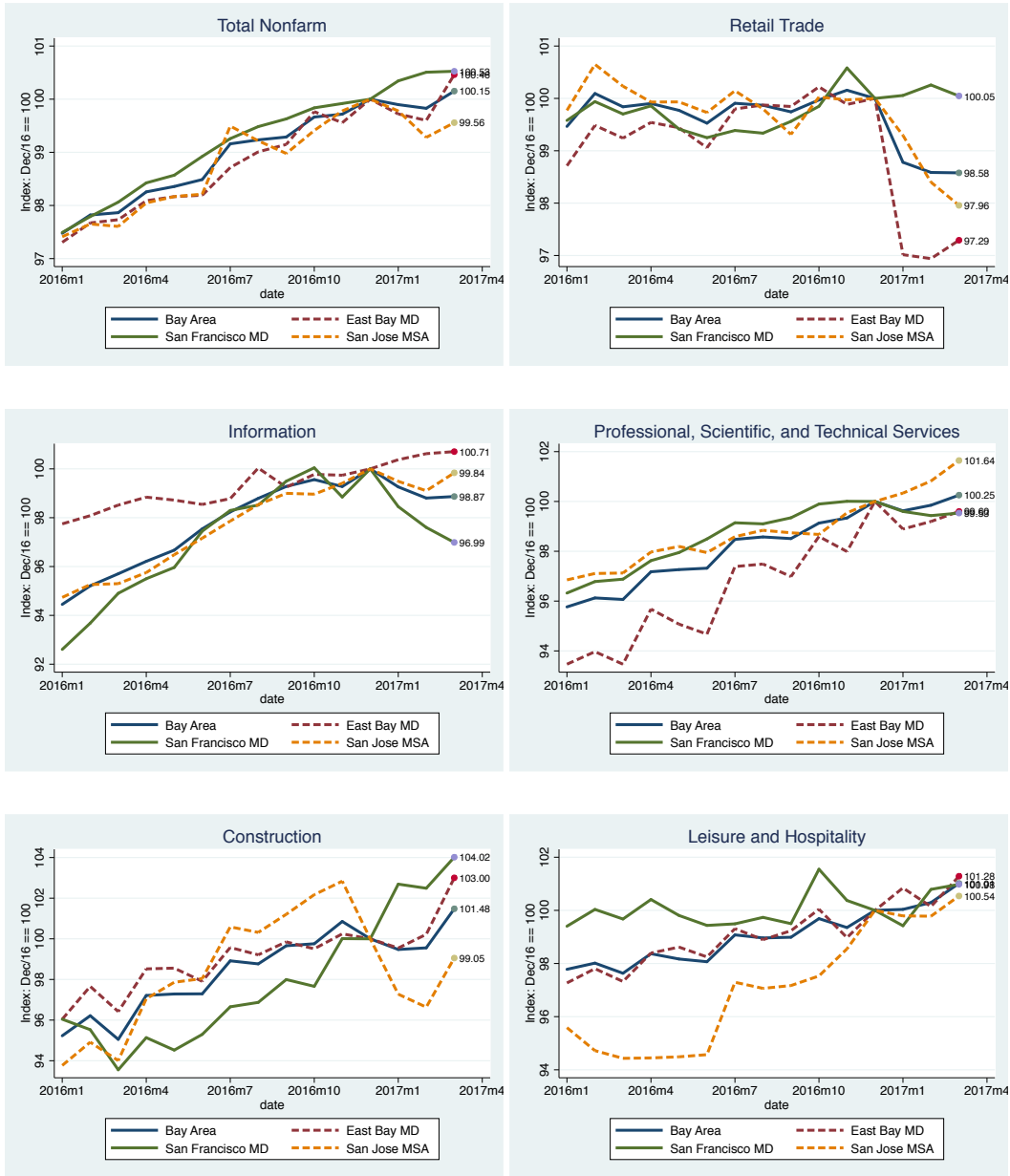
## Key Observations for California & the Bay Area

- March job growth in the Bay Area was the strongest since October of last year. Growth was much higher than expected at just a 4.0% annualized rate. This growth was surprising as it follows two months of employment declines in the Bay area.
- Bay Area employment growth was led by growth in the East Bay, which grew at a surprisingly fast 10.9% annualized rate, or 9,900 jobs.
- Industries driving employment growth in the Bay Area include construction (25.8%, 3,600 jobs), leisure and hospitality (9.0%, 3,100 jobs), and transportation and warehousing (12.2%, 900 jobs).
- Santa Rosa was the only Bay Area region to experience job losses in March.
- Growth in the East Bay was led by construction (38.9%, 1,900), durable goods manufacturing (15.3%, 700 jobs), leisure and hospitality (14.6%, 1,300 jobs) and professional and business services (14.4%, 2,100 jobs).
- The San Francisco MD continued very slow job growth (0.2%, 200 jobs), but experienced continued job declines in the information sector (-7.3%, annualized, -400 jobs). Significant job gains came in construction (19.4%, 600 jobs) and transportation and warehousing (16.3%, 500)
- The San Jose MSA experienced robust job growth (3.4%, 3,000 jobs) after experiencing declines in the last two months. Job growth was notably strong in the technology industries: information (9.3%, 600 jobs) and PSTS (10.2%, 1,200 jobs).
- Job growth in the state as a whole remained relatively steady, growing by 19,300 jobs, or at a 1.4% annualized rate.

### Overall Summary

- After two extremely disconcerting jobs reports for the Bay Area, the March jobs report is very positive. The Bay Area is once again growing more than it's share of statewide jobs: 12,500 out of 19,300.
- Weakness in the technology sector, in particular, has abated somewhat. However, the information sector remains below its peak.
- Weakness in the retail trade sector, however, continues.
- Caution is still the watchword. Though things have turned around in the last month, the course could reverse itself once again in the coming months.

## Growth in Payrolls in Select Industries Around the Bay Area



## Employment Growth by Industry in the Bay Area for March, 2017, Seasonally Adjusted

Industry	Employment	Share	Empl Growth	% Growth - Annualized Rate					
				Monthly Month	Qtr	6mo	1yr	3yr	5yr
<b>Total Nonfarm</b>	3,876	100.0	12.5	4.0	0.6	1.7	2.3	3.2	3.7
<b>Total Private</b>	3,394	87.6	14.7	5.3	1.5	1.9	2.5	3.5	4.1
<b>Goods Producing</b>	539	13.9	5.0	11.7	2.7	2.3	2.4	4.0	4.0
Mining, Logging and Construction	196	5.1	3.7	25.5	6.1	3.5	6.3	7.7	8.6
Mining and Logging	2	0.0	0.0	0.0	0.0	-11.4	0.0	-3.7	0.0
Construction	191	4.9	3.6	25.8	6.0	3.7	6.8	8.0	8.7
Manufacturing	342	8.8	1.0	3.7	0.5	0.5	0.2	2.1	1.9
Durable Goods	236	6.1	1.2	6.3	-0.2	1.8	0.3	2.1	1.6
Non-Durable Goods	95	2.5	-0.1	-1.0	0.3	-3.1	-0.5	1.6	2.1
<b>Service Providing</b>	3,343	86.3	11.6	4.3	1.3	2.0	2.5	3.2	3.7
Trade, Trans & Utilities	593	15.3	1.2	2.5	-2.3	-0.1	0.9	1.9	2.6
Wholesale Trade	133	3.4	-0.1	-1.1	1.5	2.1	2.8	2.2	3.2
Retail Trade	343	8.9	-0.0	-0.1	-5.6	-2.3	-1.3	0.6	1.5
Trans & Warehousing	91	2.3	0.9	12.2	2.8	4.6	6.2	6.8	6.2
Utilities	6	0.1	0.0	0.0	-6.7	-3.4	-3.4	0.0	1.9
Information	181	4.7	0.1	0.8	-4.5	-0.8	3.3	7.7	8.2
Financial Activities	198	5.1	0.0	0.1	1.0	4.0	3.1	3.1	2.9
Finance & Insurance	131	3.4	0.0	0.0	1.0	4.0	3.1	3.6	3.1
Real Estate & Rental & Leasing	54	1.4	0.0	1.0	1.4	4.6	3.9	2.8	3.4
Professional & Business Svcs	745	19.2	3.9	6.5	1.1	1.5	2.4	3.8	5.0
Prof, Sci, & Tech	441	11.4	1.8	5.0	1.0	3.6	4.4	5.4	6.1
Admin & Support Svcs	192	5.0	2.1	13.8	-0.8	-2.4	-0.6	2.3	4.5
Employment Svcs	64	1.7	-0.2	-3.7	2.5	-3.5	-2.8	4.0	4.6
Educational & Health Svcs	582	15.0	1.7	3.6	4.1	3.2	3.2	3.4	3.7
Education Svcs	97	2.5	-0.6	-7.7	-3.1	0.3	1.0	1.7	3.1
Health Care & Social Assistance	459	11.8	2.2	5.8	5.9	4.0	3.6	3.7	3.7
Leisure & Hospitality	429	11.1	3.1	9.0	4.1	4.1	3.5	3.7	4.6
Arts, Entertainment & Recreation	39	1.0	0.0	0.5	0.1	6.1	5.4	4.5	3.1
Accommodation & Food Svcs	349	9.0	2.3	8.4	5.2	2.9	2.1	3.4	4.7
Other Svcs	129	3.3	0.8	7.7	5.7	2.6	3.6	2.3	2.9
<b>Government</b>	486	12.5	0.3	0.8	-0.1	1.5	2.2	2.0	1.5
Federal	48	1.2	-0.1	-3.2	-2.6	-0.2	0.7	0.5	-0.3
State	98	2.5	0.3	3.5	-0.8	1.3	0.8	1.6	1.0
Local	340	8.8	0.2	0.6	0.2	1.3	2.9	2.4	2.0
Local Government Education	166	4.3	0.3	2.1	1.2	1.3	3.4	2.6	1.9

Source: EDD, Marin Economic Consulting

## Employment Growth by Industry in the San Francisco MD for March, 2017, Seasonally Adjusted

Industry	Employment	Share	Empl Growth	% Growth - Annualized Rate					
				Monthly Month	Qtr	6mo	1yr	3yr	5yr
<b>Total Nonfarm</b>	1,110	100.0	0.2	0.2	2.1	1.8	2.5	4.1	4.5
<b>Total Private</b>	981	88.3	1.7	2.2	1.2	1.6	2.6	4.3	5.0
<b>Goods Producing</b>	79	7.1	0.9	14.2	9.4	6.1	6.4	5.6	5.9
Mining, Logging and Construction	42	3.7	0.6	19.5	17.5	12.8	11.2	9.1	9.7
Mining and Logging	0	0.0	0.0	0.0	0.0	0.0	0.0	0.0	
Construction	41	3.7	0.6	19.4	17.1	12.7	11.2	9.1	9.6
Manufacturing	38	3.4	0.0	1.5	2.8	-0.2	1.7	2.4	2.6
Durable Goods	18	1.6	0.0	1.2	2.5	1.4	2.3	3.6	3.0
Non-Durable Goods	20	1.8	0.0	0.3	2.3	-1.1	1.1	1.4	2.3
<b>Service Providing</b>	1,031	92.8	1.1	1.3	0.6	1.3	2.2	3.9	4.4
Trade, Trans & Utilities	159	14.3	0.4	3.2	4.2	3.3	3.4	3.5	3.9
Wholesale Trade	28	2.6	0.0	0.9	2.5	2.5	3.6	3.6	4.6
Retail Trade	81	7.3	-0.2	-2.5	0.2	1.0	0.3	0.9	1.8
Trans & Warehousing	44	3.9	0.5	16.3	12.9	8.6	10.4	9.8	9.0
Utilities	6	0.5	0.0	0.0	-6.7	-3.4	-3.4	0.0	1.9
Information	70	6.3	-0.4	-7.3	-11.5	-5.0	2.2	11.0	11.5
Financial Activities	80	7.2	0.2	2.4	0.9	3.4	3.3	4.2	4.0
Finance & Insurance	58	5.3	0.1	1.4	-0.6	2.2	2.3	4.2	3.6
Real Estate & Rental & Leasing	22	2.0	0.1	5.6	4.6	6.8	5.9	4.4	4.8
Professional & Business Svcs	273	24.6	0.2	0.9	-2.5	-0.5	1.2	4.6	6.1
Prof, Sci, & Tech	180	16.2	0.2	1.2	-1.9	0.4	2.7	6.2	7.2
Admin & Support Svcs	60	5.4	-0.1	-2.2	-2.9	-2.8	-2.9	0.8	3.6
Employment Svcs	18	1.6	-0.0	-3.1	4.1	-3.3	-7.9	5.0	3.3
Educational & Health Svcs	135	12.2	0.0	0.2	2.6	2.4	2.6	2.6	2.7
Education Svcs	28	2.6	-0.1	-5.0	4.7	3.8	2.1	1.8	3.3
Health Care & Social Assistance	107	9.6	0.0	0.3	1.7	2.1	2.7	2.8	2.6
Leisure & Hospitality	141	12.7	0.3	2.3	4.0	3.0	1.3	3.1	3.8
Arts, Entertainment & Recreation	22	1.9	-0.0	-2.6	-1.4	5.4	5.3	5.3	3.6
Accommodation & Food Svcs	120	10.8	0.2	2.0	5.1	2.2	0.6	2.7	3.9
Other Svcs	42	3.8	0.3	7.5	5.4	3.7	4.2	2.2	4.0
<b>Government</b>	129	11.6	0.0	0.3	-0.3	1.0	2.1	2.7	1.5
Federal	18	1.6	-0.1	-4.4	-2.7	-1.6	0.0	0.2	-0.3
State	36	3.2	-0.0	-0.5	1.1	2.1	2.9	3.4	1.5
Local	76	6.8	0.2	2.7	-0.3	1.2	2.2	3.0	2.0
Local Government Education	26	2.4	0.0	1.4	2.8	1.5	2.4	2.9	1.9

Source: EDD, Marin Economic Consulting

## Employment Growth by Industry in the San Jose MSA for March, 2017, Seasonally Adjusted

Industry	Employment	Share	Empl Growth	Monthly		% Growth - Annualized Rate				
				Month	Qtr	6mo	1yr	3yr	5yr	
<b>Total Nonfarm</b>	1,081	100.0	3.0	3.4	-1.8	1.2	2.0	3.0	3.7	
<b>Total Private</b>	990	91.6	5.1	6.4	0.6	1.7	2.5	3.4	4.1	
<b>Goods Producing</b>	214	19.8	1.7	10.3	0.9	2.4	1.6	2.8	2.6	
Mining, Logging and Construction	49	4.6	1.2	34.4	-3.5	-4.0	5.3	8.8	9.2	
Mining and Logging	0	0.0	0.0	0.0	0.0	0.0	0.0	0.0	10.0	
Construction	49	4.5	1.2	34.5	-3.7	-4.2	5.4	8.8	9.3	
Manufacturing	165	15.2	0.5	3.4	1.3	3.2	0.5	1.2	1.1	
Durable Goods	152	14.1	0.5	4.2	1.2	2.9	0.4	1.2	1.1	
Non-Durable Goods	13	1.2	-0.0	-3.4	-0.1	7.5	1.6	0.6	1.1	
<b>Service Providing</b>	871	80.6	4.2	5.9	0.9	1.9	2.5	3.2	4.1	
Trade, Trans & Utilities	139	12.9	0.1	0.5	-7.0	-2.4	-0.7	0.3	1.4	
Wholesale Trade	37	3.5	0.1	4.7	-8.3	-4.5	0.2	-0.1	1.8	
Retail Trade	86	7.9	-0.4	-5.3	-7.9	-2.7	-2.3	-0.0	0.6	
Trans & Warehousing	14	1.3	0.1	10.0	11.4	8.9	7.0	4.8	6.5	
Information	77	7.1	0.6	9.3	-0.7	1.7	4.8	6.5	8.7	
Financial Activities	35	3.3	-0.5	-14.6	-5.0	-2.0	-0.2	1.1	1.4	
Finance & Insurance	21	2.0	-0.3	-16.0	-4.2	-1.7	-0.9	0.5	1.3	
Real Estate & Rental & Leasing	14	1.3	-0.1	-10.7	-6.6	-2.2	0.8	1.9	1.6	
Professional & Business Svcs	230	21.2	2.2	12.2	4.6	3.0	3.1	5.0	6.5	
Prof, Sci, & Tech	153	14.2	1.2	10.2	6.7	6.0	4.6	5.8	6.9	
Admin & Support Svcs	61	5.6	0.8	17.6	0.2	-3.2	0.4	3.5	5.7	
Employment Svcs	24	2.2	-0.0	-0.5	6.6	-3.6	1.5	4.3	5.0	
Educational & Health Svcs	165	15.2	0.7	5.4	0.7	2.1	2.7	3.6	4.3	
Education Svcs	44	4.1	-0.5	-13.3	-11.2	-4.7	-1.6	1.6	3.2	
Health Care & Social Assistance	121	11.2	1.3	14.5	6.9	5.5	4.3	4.4	4.8	
Leisure & Hospitality	103	9.5	0.8	9.5	2.2	7.1	6.5	4.6	5.5	
Accommodation & Food Svcs	86	8.0	0.4	5.6	3.8	3.9	3.0	3.9	5.1	
Other Svcs	28	2.6	0.1	3.6	9.6	0.2	3.3	2.3	2.8	
<b>Government</b>	94	8.7	-0.3	-3.5	-2.2	0.2	0.6	0.1	0.5	
Federal	10	0.9	-0.0	-0.6	-0.2	2.0	2.0	1.0	0.8	
State	7	0.6	0.2	39.4	8.0	2.5	1.4	2.6	0.9	
Local	77	7.2	-0.3	-4.5	-3.0	-0.1	0.4	-0.1	0.4	
Local Government Education	40	3.7	0.0	0.8	-3.1	-1.3	-0.9	-2.5	-0.7	

Source: EDD, Marin Economic Consulting

## Employment Growth by Industry in the Oakland MD for March, 2017, Seasonally Adjusted

Industry	Employment	Share	Empl Growth	% Growth - Annualized Rate					
				Monthly Month	Qtr	6mo	1yr	3yr	5yr
<b>Total Nonfarm</b>	1,156	100.0	9.9	10.9	1.9	2.7	2.8	3.2	3.2
<b>Total Private</b>	978	84.6	7.0	9.0	2.6	2.5	2.9	3.3	3.4
<b>Goods Producing</b>	161	13.9	2.3	18.6	4.1	2.4	2.7	5.2	4.7
Mining, Logging and Construction	71	6.2	1.9	38.3	12.1	6.0	6.7	7.5	8.0
Mining and Logging	1	0.1	0.0	0.0	0.0	-21.0	0.0	0.0	-2.2
Construction	71	6.1	1.9	38.9	12.6	6.4	6.8	7.6	8.2
Manufacturing	90	7.8	0.6	7.8	-1.4	-1.3	-0.4	3.4	2.4
Durable Goods	59	5.1	0.7	15.3	-3.1	0.4	0.1	4.6	3.1
Non-Durable Goods	31	2.7	-0.0	-0.6	-1.0	-4.6	-1.2	1.3	1.3
<b>Service Providing</b>	995	86.1	5.5	6.9	1.8	2.6	2.9	2.9	3.0
Trade, Trans & Utilities	202	17.5	0.7	4.1	-5.4	-1.4	0.4	2.1	2.7
Wholesale Trade	51	4.4	-0.3	-6.2	9.2	6.6	5.4	3.7	3.8
Retail Trade	112	9.7	0.4	4.4	-10.4	-5.1	-2.0	0.7	1.8
Trans & Warehousing	33	2.8	0.2	7.8	-12.0	-2.2	0.7	4.2	3.1
Information	27	2.3	0.0	1.0	2.9	3.0	2.2	6.0	3.4
Financial Activities	60	5.2	0.3	7.0	6.8	10.2	6.1	3.9	3.6
Finance & Insurance	42	3.7	0.3	7.7	7.5	10.9	7.0	4.9	3.7
Real Estate & Rental & Leasing	18	1.5	0.1	5.6	4.3	7.7	4.1	1.7	3.4
Professional & Business Svcs	184	15.9	2.1	14.4	2.4	2.2	3.2	2.0	2.8
Prof, Sci, & Tech	99	8.6	0.4	5.0	-1.6	5.5	6.6	4.0	3.5
Admin & Support Svcs	56	4.9	1.4	34.9	-1.2	-4.1	-1.1	2.3	4.2
Employment Svcs	23	1.9	-0.1	-7.6	-2.9	-3.4	-2.9	3.1	5.2
Educational & Health Svcs	190	16.5	0.7	4.2	7.9	4.6	3.8	3.5	3.3
Education Svcs	24	2.1	0.0	0.4	4.3	6.0	4.8	1.8	2.8
Health Care & Social Assistance	167	14.4	0.6	4.5	8.8	4.9	3.7	3.8	3.5
Leisure & Hospitality	114	9.9	1.3	14.6	5.2	4.2	4.1	4.4	5.3
Arts, Entertainment & Recreation	17	1.5	0.1	4.6	2.0	7.0	5.5	3.4	2.4
Accommodation & Food Svcs	97	8.4	1.7	23.2	7.3	3.2	3.8	4.6	5.9
Other Svcs	40	3.4	0.2	5.3	2.9	2.3	2.3	2.1	1.9
<b>Government</b>	178	15.4	0.6	4.3	1.3	2.6	3.2	2.9	1.9
Federal	14	1.2	-0.1	-4.6	-3.1	-1.5	0.1	0.3	-0.7
State	40	3.4	0.2	4.8	-4.5	1.6	0.0	0.5	0.9
Local	124	10.7	0.3	3.1	2.6	2.1	4.7	4.0	2.6
Local Government Education	64	5.6	0.2	3.5	4.2	2.8	6.8	6.7	3.7

Source: EDD, Marin Economic Consulting